



SAN Services of MEN@NET: fast-acting, secure, high-performance

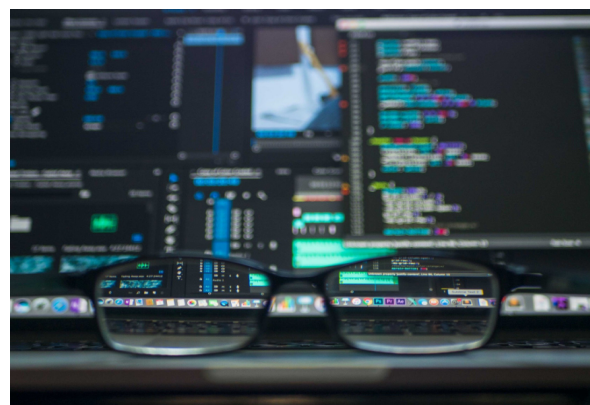


The advantages of a Storage Area Network (SAN) are obvious: Efficiency, flexibility, speed and above all disaster tolerance are key factors. Certainly, all network components should be compatible and communicate error-free with each other. The compatibility of different original equipment manufacturers (OEM) equipment is usually an issue before an upcoming expansion of the network. Nevertheless the performance of the SAN should be guaranteed, too. And that is where we come in.

The company specialises in network and performance management of high-speed data networks. We provide a comprehensive product portfolio for your SAN. We have developed our own monitoring software SAN RM and offer services, training, workshops as well as measurement and analysis equipment from popular vendors. Since 1999 we have been your reliable partner in this sector.

MEN@NET Troubleshooting

Information, figures or values of a company form an important basis for economic decisions. This company data must be available at all times with high performance. A wide range of SAN technologies designed for the security and high availability of business-critical data are available. If access to the SAN is limited or not possible at all, various factors may be the cause. In most cases, the manufacturers of the SAN components are then contacted for troubleshooting. The manufacturer's view of your own system takes into account only a part of the entire system environment. For a fast problem solution, however, a complete view is essential, which is only possible independent of the manufacturer. This is exactly our specialty. MEN@NET experts can draw on many years of experience with successfully solved troubleshooting projects. With the right tools, we can look right into the fibre optics of your communication lines, analyse the situation and identify the errors. Together with your team we develop a strategy to determine the appropriate measurement tools and procedures for MEN@NET troubleshooting in your SAN environment. Flexible execution and fast reporting are a matter of course.





Troubleshooting

MEN@NET troubleshooting usually begins with the installation of our proven monitoring software SAN RM. The collected monitoring data by our software enables us quickly to understand the overall structure of your SAN environment, confirm an error-free infrastructure or isolate potential problem areas. In addition it is possible to deepen a possible error analysis through the targeted use of the Fibre Channel Analyser. The results are documented and presented to you. We are also happy to discuss appropriate recommendations for action with you and your technical team.

Our Service -Your Benefit: **MEN@NET Troubleshooting** in brief

- Manufacturer independent analysis to minimise downtime
- Implementation using our own MEN@NET monitoring software SAN RM
- Flexible troubleshooting depending on urgency
- Use of necessary analysis tools
- Identification of existing problems in the SAN
- Documentation and presentation of the results
- Recommendations for action for sustainable error prevention

Our services for high-speed data networks



Health Check

Manufacturer-independent analysis of the SAN environment.



Review Meetings

Workshops on a regular basis to stabilise the SAN.



Remote Monitoring

Continuous monitoring of the SAN by our experts.



Troubleshooting

Immediate fault isolation of urgent SAN problems.



Pre-Deployment

Proactive verification of technology changes in the SAN.



Consulting

Individual consulting for questions about complex SAN and networks

We make performance happen ●●●



services@menatnet.com
www.menatnet.com



MEN@NET GmbH
Am Flugplatz 4
23560 Lübeck | Germany



+49 451 5040 500